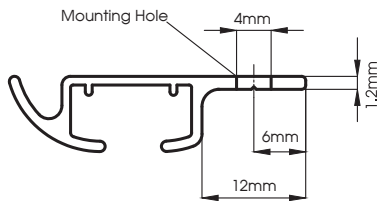


# Discrete Top Fix Curtain Track Fixing Instructions

Please read carefully before commencing



## Tools Required



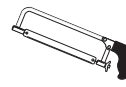
Drill



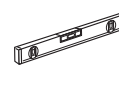
6mm Drill Bit



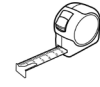
Screw Driver



Hack Saw



Spirit level



Tape Measure

All measurements are approximate.

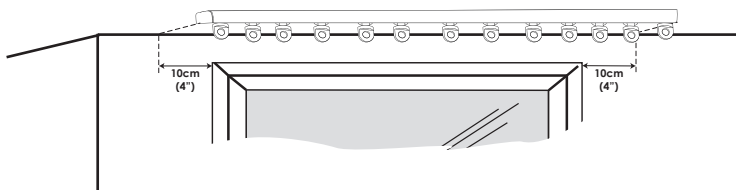
Track Length	Curtain Track	Track Mounting Holes	End Caps	Gliders	Resistance Clip	Track Connector	Wall Screws & Plugs
125cm	1	4	1 Pair	14	2	0	4
150cm	1	4	1 Pair	16	2	0	4
200cm	1	6	1 Pair	20	2	0	6
250cm	2	8	1 Pair	26	2	1	8
300cm	2	8	1 Pair	30	2	1	8
400cm	2	12	1 Pair	40	2	1	12

## Positioning the track

- 1 Mark & drill the fixing positions, making sure the track is level.

We recommend the track overlaps the window by 10cm (4") each side of the window frame.

The track can also be mounted into a window recess.

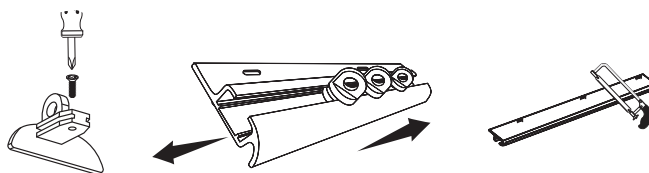


## Trimming the track

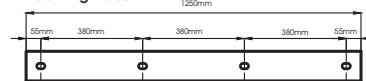
Only trim the track if it is necessary.

- 2 Slide the gliders out of the way & remove the end stop from one side of the track before cutting. Measure & mark the amount you wish to remove. Using a fine hacksaw cut from one end.

If you are trimming more than 80mm you may need to drill your own mounting hole in the track headrail to secure the track to the ceiling or recess.



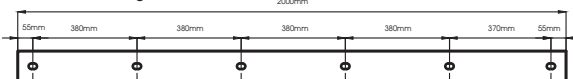
125cm 4 mounting holes



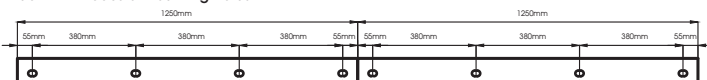
150cm 4 mounting holes



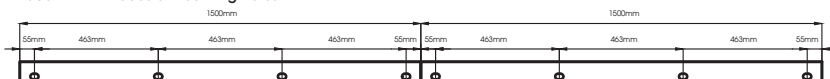
200cm 6 mounting holes



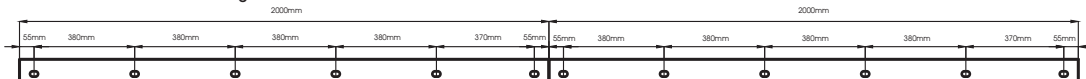
250cm = 125cm x 2 Pieces 8 mounting holes



300cm = 150cm x 2 Pieces 8 mounting holes

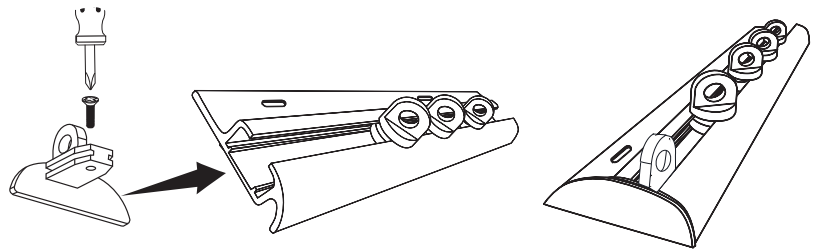


400cm = 200cm x 2 Pieces 12 mounting holes



### Re-attaching the end cap to the track

- 3 Slide the end cap on to the end of the track & tighten the screw to secure the end cap on to the track.

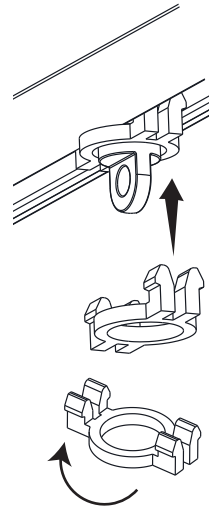


### Fitting the resistance clip

- 4 Divide the track gliders evenly either side of the track. Taking the two centre gliders, fit the resistance clip to the glider as shown.

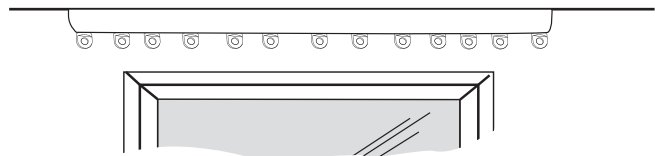
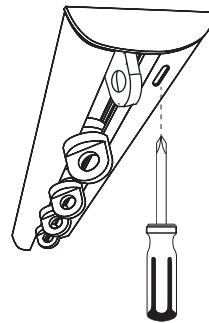
The resistance clip fits over the gliders and clicks into the underneath of the track profile.

The resistance clip allows the central gliders to stop at the point where the curtain is drawn to. The gliders will hold in place stopping your curtains moving unnecessarily along the track.



### Hanging the track

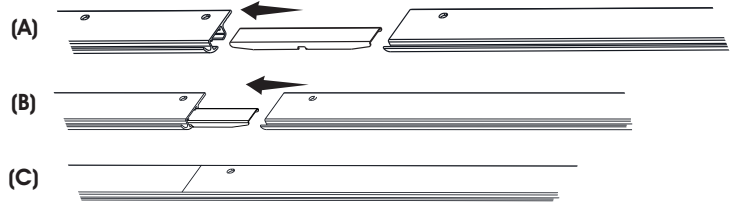
- 5 Bring the track up to the ceiling to where you marked your mounting holes. Using suitable screws for your ceiling, screw through the mounting holes to secure the track on to the ceiling.



### Connecting two track together

- 6 (A) Take the two pieces of track at the centre where the join will be. Push the connector into the underneath of the track channel half way. (B) Push the remaining track piece onto the connector. (C) Ensure both track pieces are tightly secured and the track pieces sit flush together.

#### Top of the track view



#### Underneath the track view

